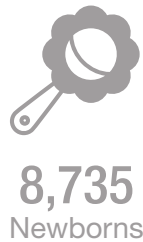
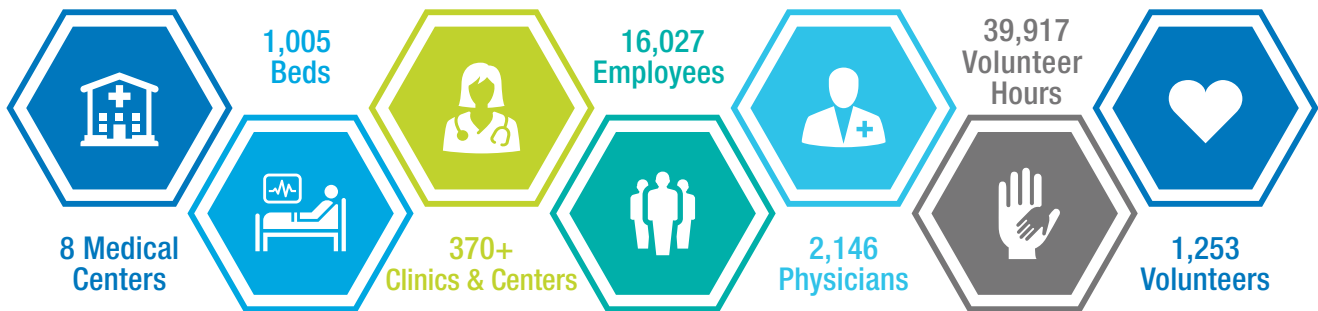


As the only Idaho-based, not-for-profit, community-owned and community-led health system, St. Luke's is dedicated to our mission to improve the health of people in the communities we serve. From our founding in 1902, to our establishment as a health system in 2006, to today, St. Luke's has long been a leader in quality care and a vital partner in addressing community health needs.

## Caring for Our Communities – FY 2022

Current as of Sept. 30, 2022.



### Philanthropy



# Reinvesting in Our Communities – St. Luke’s Health System



**\$27.1 Million**  
Charity  
Care



**\$2.05 Million**  
Property  
Taxes



**\$947 Million**  
Community  
Benefit



**\$1.08 Million**  
Community Health Improvement  
Fund Grants to 100 Nonprofits

World-Class Cancer  
Care for 50+ Years



Idaho’s Only  
Children’s  
Hospital



## Awards

merATIVE  
15 Top  
Health  
Systems  
2022

