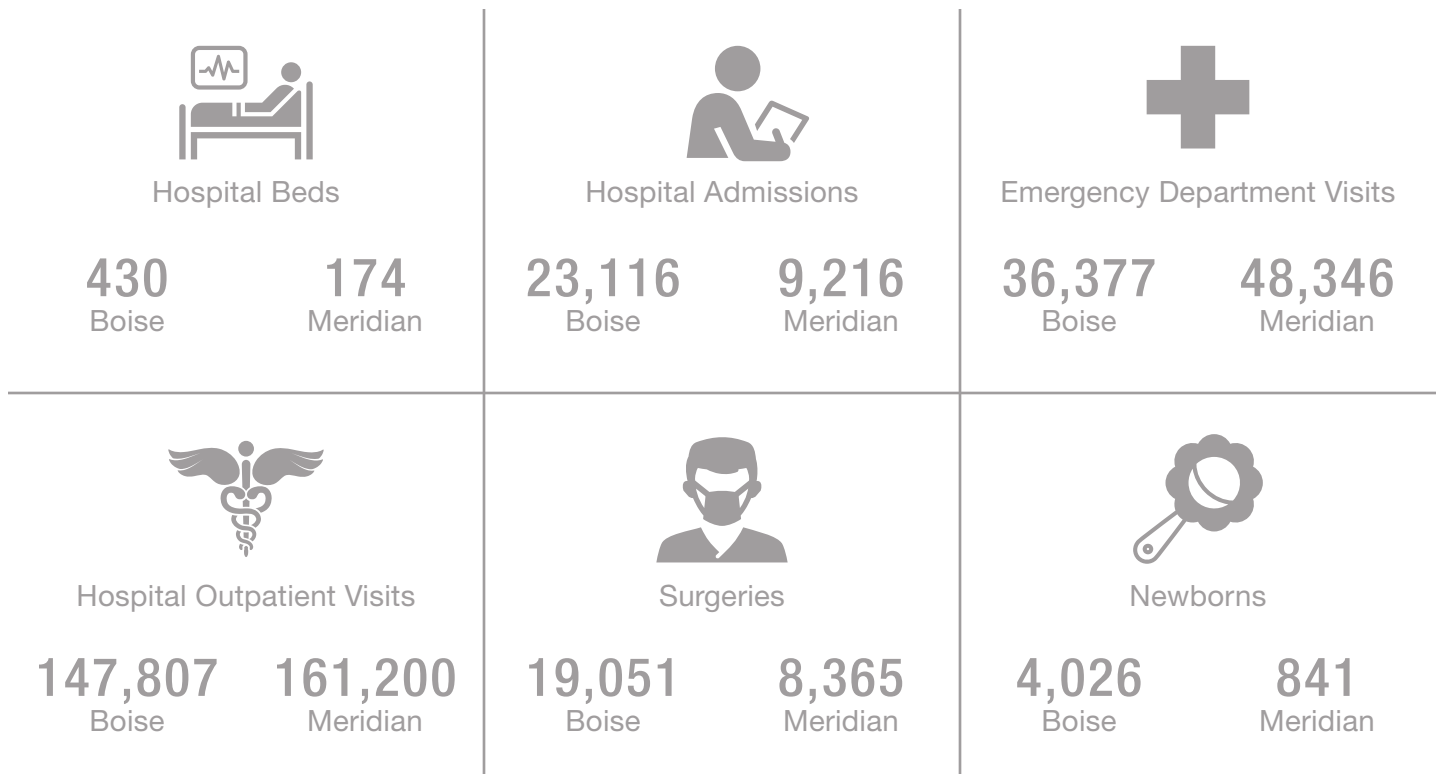
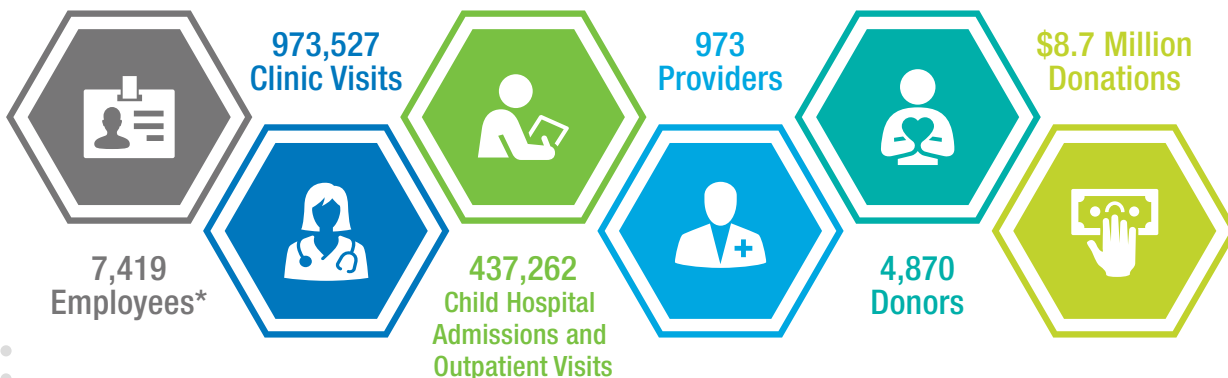


St. Luke's in the Treasure Valley serves the growing cities of Boise, Meridian, Eagle and beyond. St. Luke's Boise is Idaho's largest health care provider, the flagship hospital of St. Luke's Health System and home to the state's only Children's Hospital. St. Luke's Meridian is a full-service medical center with the busiest emergency department in Idaho. Our Boise and Meridian hospitals and Treasure Valley clinics are Magnet-designated for nursing excellence.

## Caring for Our Communities FY 2020



## Treasure Valley - Boise, Meridian, Eagle



\*Includes all five cancer centers.

St. Luke's did not track hospital volunteers in 2020 due to COVID-19

# Reinvesting in Our Communities – Treasure Valley

Boise, Eagle, Meridian, Canyon County and Fruitland



**\$30.5 Million**  
Charity Care



**\$591.59 Million**  
Community Benefit



**\$656,000**  
Community Health Grants  
to 100 Nonprofits

## Economic Impact – Treasure Valley

**\$3.2 Billion**  
Sales Impact  
(Direct & Indirect)

**\$1.4 Billion**  
Wage & Salary Impact



**\$64.3 Million**  
Indirect Tax Effect  
(Mainly Sales & Property Taxes)

**23,682**  
Jobs Created

## Specialties

### Boise

- Idaho's Only Children's Hospital
- Adult and Pediatric Cancer Care
- Idaho's Only Blood Cancer Center
- Emergency Services
- Level I Stroke Center
- Level I STEMI Center (for Heart Attack)
- Level II Pediatric Trauma Center
- Level IV NICU in Boise (minus Complex Cardiac Surgery and ECMO)
- OB/Labor and Delivery
- Rehabilitation Hospital
- Cardiology
- Neurology
- Neurosurgery
- Intensive Care
- Orthopedic and General Surgery

### Meridian

- Emergency Services
- Level II Stroke Center in Meridian
- Level I STEMI Center (for Heart Attack)
- Level IV Trauma Center
- OB/Labor and Delivery
- Level II NICU
- Cancer Care
- Cardiology
- Intensive Care
- Orthopedic and General Surgery
- Lifestyle Medicine
- Cardiopulmonary Rehabilitation

